



2 Cutlers Close, Maidenhead, SL6 8UU  
£750,000

 **HORLER**



## 2 Cutlers Close, Maidenhead, SL6 8UU

Nestled in the charming area of Cutlers Close, Maidenhead, this delightful house offers a perfect blend of comfort and convenience. The property is situated in a peaceful neighbourhood, making it an ideal retreat for families and professionals alike.

Located conveniently close to local amenities, schools, and transport links, this house in Cutlers Close is not just a home, but a lifestyle choice. With its appealing features and prime location, it presents an excellent opportunity for those looking to settle in Maidenhead. Do not miss the chance to make this charming property your own. CALL TODAY 01753621234 TO ARRANGE A VIEWING



Nestled in the charming area of Cutlers Close, Maidenhead, this delightful four-bedroom end-of-terrace house offers a perfect blend of modern living and serene surroundings. Built in 2017, the property boasts contemporary design and high-quality finishes throughout, making it an ideal choice for families or those seeking a spacious home.

The house is conveniently located near the picturesque river, providing opportunities for leisurely walks and outdoor activities. The inviting layout features generous living spaces, allowing for both relaxation and entertaining. Each of the four bedrooms is well-proportioned, ensuring comfort and privacy for all family members.

With its modern amenities and proximity to local conveniences, this property is not only a beautiful home but also a practical choice for everyday living. Whether you are looking to enjoy the tranquillity of riverside life or the vibrant community of Maidenhead, this home is sure to meet your needs. Don't miss the chance to make this lovely house your new home.

### **General Information**

Council Tax Band: E

Two Allocated Parking Bays

Maintenance Fee: £15 per month

### **Legal Note**

**\*\*Although these particulars are thought to be materially correct their accuracy cannot be guaranteed and they do not form part of any contract\*\***

In accordance with the EA Code of Conduct, we declare that a member of staff from Horler and Associates has an interest in this property.

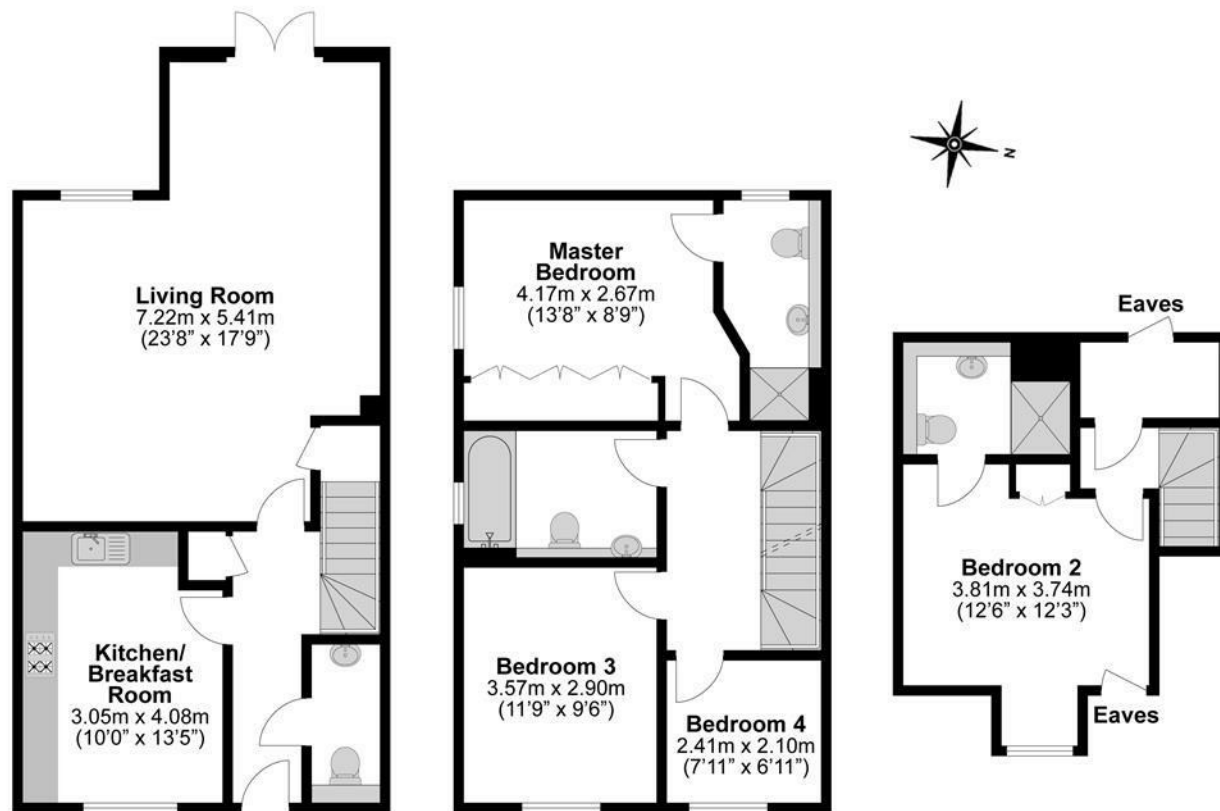












**Illustrations are for identification purposes only,  
measurements are approximate, not to scale.**